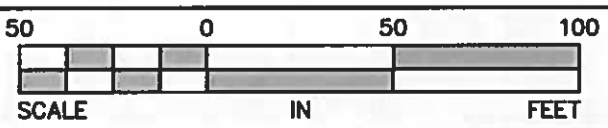


PRE-DEVELOPMENT DRAINAGE
AREA TO HW-2 = 1.044 AC.

PRE-DEVELOPMENT DRAINAGE
AREA TO HW-1 = 0.019 AC.

GILMORE & ASSOCIATES, INC.
ENGINEERING & CONSULTING SERVICES
65 EAST BUTLER AVENUE, SUITE 100, NEW BRITAIN, PA 18901 • (215) 345-4330

DRAWN BY:
BMS



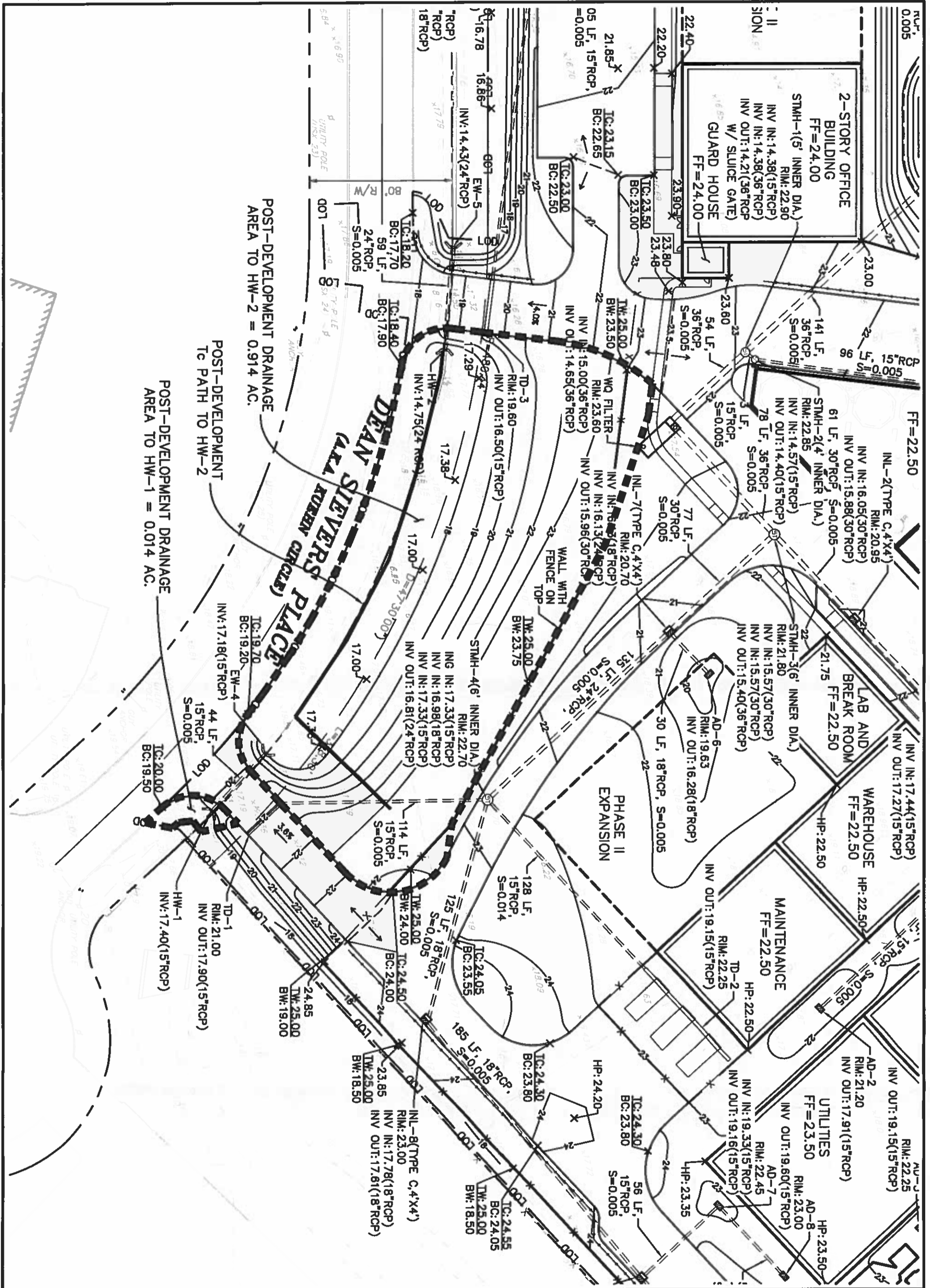
EXHIBITS
PRE-DEVELOPMENT CHANNEL
ELCON RECYCLING

FALLS TOWNSHIP BUCKS COUNTY, PENNSYLVANIA

JOB NO.:
1207083

DATE:
12/10/18

SCALE:
1"=50'



POST-DEVELOPMENT DRAINAGE
AREA TO HW-2 = 0.914 AC.

POST-DEVELOPMENT
TO PATH TO HW-2

POST-DEVELOPMENT DRAINAGE
AREA TO HW-1 = 0.014 AC.

GILMORE & ASSOCIATES, INC.
ENGINEERING & CONSULTING SERVICES
65 EAST BUTLER AVENUE, SUITE 100, NEW BRITAIN, PA 18901 • (215) 345-4330

EXHIBITS
POST-DEVELOPMENT CHANNEL
ELCON RECYCLING

JOB NO.:
1207083

DATE:
12/10/18

SCALE:
1"=50'

FALLS TOWNSHIP BUCKS COUNTY, PENNSYLVANIA

DRAWN BY:
BMS

