

PROJECT GOALS

The following principles guide how this plan will rethink the County's parks, open space, and natural resources as one cohesive system:



Sustainability & Environment



Accessibility



Connectivity



Equity & Inclusion



Adaptability to Current & Future Needs



Long-term Maintenance & Stewardship

Additional details about project goals will be identified throughout the project and shared at key intervals with the public.

GET INVOLVED

Work has begun on the Comprehensive Recreation, Parks, and Open Space (CRPOS) Plan. Bucks County Parks and Recreation is looking for input from people who live in Bucks County and visitors of the parks system to understand how people use the park system, what works well, and what could be improved.

You can get involved by using your phone, tablet, or computer to visit <https://metroquestsurvey.com/5fa1> or by scanning the QR code below with your device.

The link will take you to the Bucks County CRPOS Plan Survey. Take the short survey and leave comments about the different parks. This is the first step in the public engagement process. The County will also provide regular updates on its website about what's going on with the project, the schedule, and opportunities for the public to get involved.

1. Which park have you visited during the last year?
2. What do you think makes a good park?
3. What prevents you and/or members of your household from using the parks and recreation facilities in the County?

SCAN HERE!



OR ACCESS THE LINK AT:

[HTTPS://METROQUESTSURVEY.COM/5FA1](https://metroquestsurvey.com/5fa1)

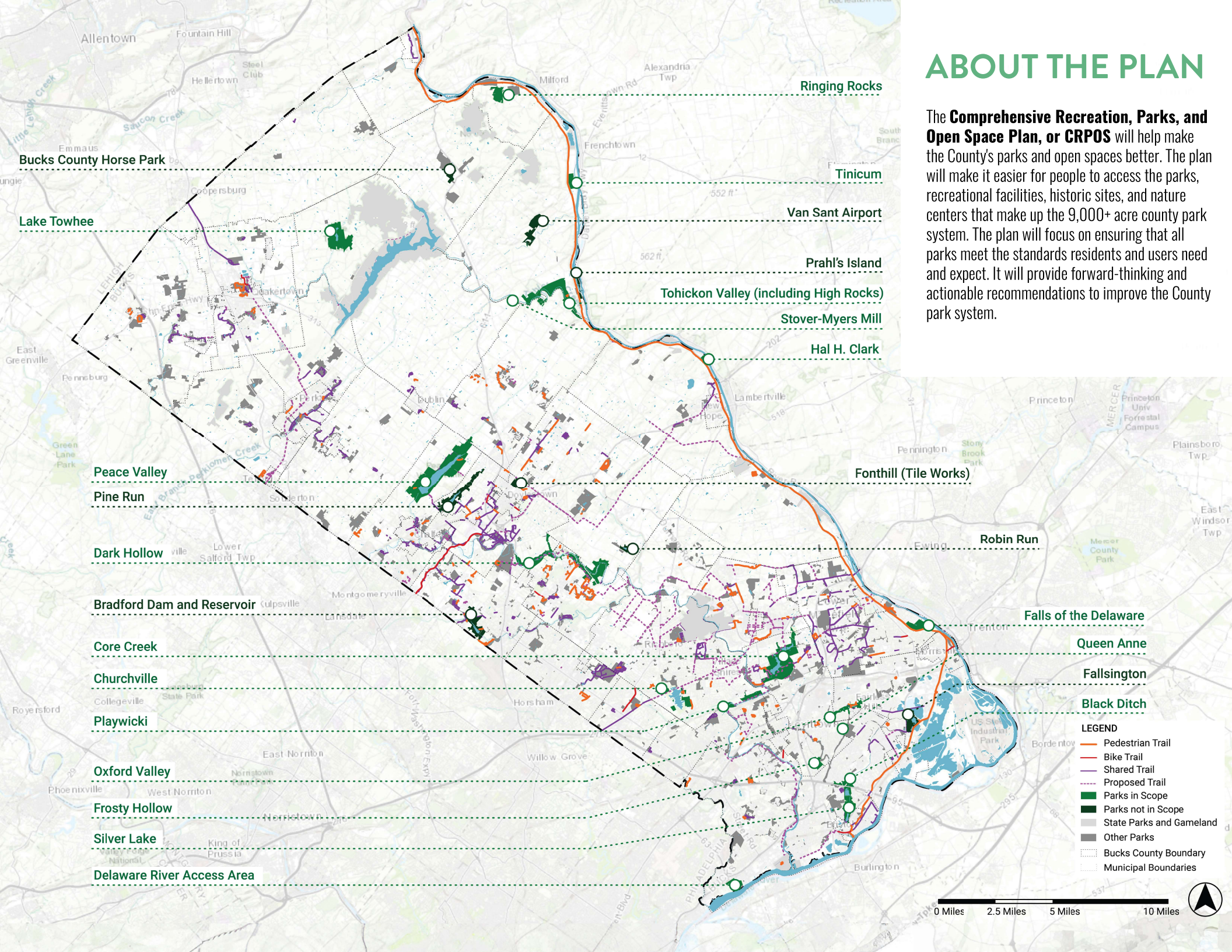


**Bucks County
Parks & Recreation**

**A COMPREHENSIVE
PLAN FOR THE
COUNTY'S
RECREATION, PARKS,
AND OPEN SPACE THAT
RESPONDS TO CURRENT
AND FUTURE NEEDS.**

ABOUT THE PLAN

The **Comprehensive Recreation, Parks, and Open Space Plan, or CRPOS** will help make the County's parks and open spaces better. The plan will make it easier for people to access the parks, recreational facilities, historic sites, and nature centers that make up the 9,000+ acre county park system. The plan will focus on ensuring that all parks meet the standards residents and users need and expect. It will provide forward-thinking and actionable recommendations to improve the County park system.



Bucks County Horse Park

Lake Towhee

Peace Valley

Pine Run

Dark Hollow

Bradford Dam and Reservoir

Core Creek

Churchville

Playwicki

Oxford Valley

Frosty Hollow

Silver Lake

Delaware River Access Area

Ringing Rocks

Tinicum

Van Sant Airport

Prahl's Island

Tohickon Valley (including High Rocks)

Stover-Myers Mill

Hal H. Clark

Fonhill (Tile Works)

Robin Run

Falls of the Delaware

Queen Anne

Fallsington

Black Ditch

LEGEND

- Pedestrian Trail
- Bike Trail
- Shared Trail
- Proposed Trail
- Parks in Scope
- Parks not in Scope
- State Parks and Gameland
- Other Parks
- Bucks County Boundary
- Municipal Boundaries

0 Miles 2.5 Miles 5 Miles 10 Miles

